

2025 WORK PLAN

BASIN ENVIRONMENTAL IMPROVEMENT PROJECT COMMISSION





BUNKER HILL SUPERFUND SITE



2025 WORKPLAN

ENVIRONMENTAL CLEANUP WORK

Human Health Remedies

Waste Area Development & Management

Remedial Actions Upper Basin

Remedial Actions Lower Basin

Basin Environmental Monitoring Program

Operation And Maintenance

OTHER ACTIVITIES AND RESPONSIBILITIES

DEQ Lake Management Activities

Coeur d'Alene Tribe Lake Activities

Flood Control and Infrastructure

Communication and Public Involvement

State of Washington Activities

Coordination with Restoration Partnership



HUMAN HEALTH REMEDIES

RESIDENTIAL AND COMMERCIAL PROPERTY REMEDIATION



Remediations to date
3,236 properties in "Box"
3,935 properties in "Basin"

2024

- No properties have been remediated
- 1 property including ROW & drinking water source was sampled
- 2 Properties private drinking water source was sampled

2025 Goals

- Complete sampling and remediation if sampling above action levels & access is granted
- 9 properties in the "Box" need remediation
- 201 properties in the "Basin" require sampling
- 38 properties in the "Basin" need remediation

UPDATED RESIDENTIAL SOIL LEAD GUIDANCE



Residential soil lead **screening level** reduced from 400 PPM to 200 PPM or 100 PPM when multiple sources of lead exposure are present

Clean up levels are developed after investigations, assessments, site specific risks & other relevant information

2025 GOALS

Assess need for changes in current clean up levels

Review assumptions used to develop current clean up levels

Review site specific data to determine progress toward meeting screening level goals

If it is determined updated cleanup levels are needed work will begin in late 2025/early 2026

Changes to current approach will require amending decision documents & obtaining public input

LEAD HEALTH INTERVENTION PROGRAM

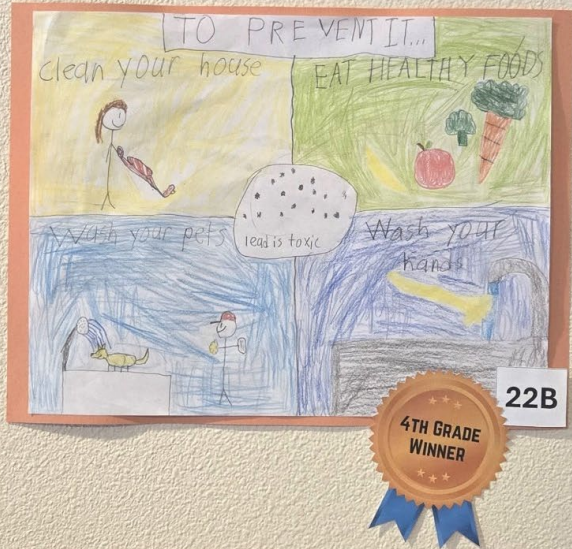
LHIP Services

- Year-round blood lead screening and free follow-ups
- HEPA vacuum loan program for cleaning residences
- Education, outreach, and awareness for parents, children, community members, recreationalists, and visitors
- Education and outreach at community events local schools for grades K-12.
- Sampling of soil, dust, paint, water, and other media as appropriate
- Provide healthy homes items including dust cloths, surface cleaner, door mats, and replacement furnace filters

2025 GOALS

- Free blood lead screening for residents living within the Bunker Hill Superfund Site boundaries
- Continue annual summer screening with \$50 incentive for children between ages 6 months and 6 years

If an individual is found to have elevated blood lead levels:
Free in-home consultation to identify sources of exposure
Help identify potential exposure pathways the cleanup can address





RECREATIONAL USE ACTIVITIES

2025 GOALS

- Box recreational site strategy and implementation plan to be completed
- Monitor completed remediation projects & install/update signs in the Basin
- Evaluate sample results & potential clean up options at informal recreational sites east of Thompson Lake
- Characterize activities at other Lower Basin recreational areas
- In the Box, update signs and evaluate access controls at mine and recreation sites



WASTE AREA DEVELOPMENT & MANAGEMENT

REPOSITORIES

PAGE

Operated by IDEQ receives waste from the Box and from the ICP
384,174 cy remaining capacity

BIG CREEK

Operated by CDA Trust receives waste from the Upper Basin
81,500 cy remaining capacity

BIG CREEK ANNEX

Operated by CDA Trust receives waste from the Upper Basin
168,871 cy remaining capacity

LOWER BURKE CANYON

Operated by CDA Trust receives waste from the Upper Basin
1,028,025 cy remaining capacity

EAST MISSION FLATS

Operated by CDA Trust receives waste from the Lower Basin
146,000 cy remaining capacity



WASTE CONSOLIDATION AREAS

EAST FORK NINEMILE

Received waste from Tamarack and Dayrock Complex
All priority cleanups were completed in 2024
Final cover expected to be completed in 2026

CANYON COMPLEX

Repository and WCA
Accepting waste from Canyon Creek remedial actions
In 2025, waste from Hecla Star and Tamarack No. 7

**A DECISION HAS NOT BEEN MADE YET ON THE FINAL
LOCATION OF A LOWER BASIN WCA**



REMEDIAL ACTIONS



UPPER BASIN REMEDIAL ACTIONS

2012 UPPER BASIN RODA GOALS

Clean up to improve water quality and address human health and environmental risks

Clean up in the Box to improve water quality of the SFCDR

Treat additional contaminated water

Focus on source control actions to address particulate lead

Protect remedies from flooding

BOX REMEDIAL ACTIONS



CIA SLUDGE POND CLOSURE

Old sludge pond will be capped, covered and tied into existing CIA cover system.

PINEHURST ELEMENTARY

Removal of deteriorated sections, regrading to promote drainage, and re-surfacing playground area.

AIRPORT RIVERWALK TRAILS

Placement of barrier at one or two Oasis pads along previously completed trail.

EAST SMELTERVILLE FLATS

16-acre contaminated site will be excavated and capped including removal along floodway on the north bank of the SF CDR.

RIGHTS OF WAY, SIDEWALKS, AND PARKING AREAS

Deteriorated barriers will be remediated: 33% of Uptown Kellogg's sidewalks will be replaced & 100% of the Galena Ridge overview ROW capped.

UPPER BASIN REMEDIAL ACTIONS



NINEMILE CREEK BASIN

CDA Trust completed priority cleanup in 2024. In 2025, O & M will continue at cleanup sites as well as remedial action effectiveness monitoring

CANYON CREEK BASIN

In 2025, CDA Trust will continue to investigate, design and implement clean up projects

INVESTIGATIONS AND DESIGNS

Investigation at Lower Canyon Creek Riparian area. Initiate design of Frisco Reach and complete the design for Standard Mammoth Reach

HECLA STAR

Continue remediation of the 22-acre site including removal of mine waste, placement of backfill, road & creek reconstruction

TAMARACK #7

Start remediation of the 23-acre site near Black Bear by removal of mine waste, re-grading and capping of mine waste, placement of clean backfill and reconstruction of Canyon Creek



UPPER BASIN REMEDIAL ACTIONS CONTINUED

PINECREEK DOUGLAS COMPLEX

Located on Pine Creek 6 miles south of Pinehurst, cleanup will include re-grading and capping mine wastes and placement of clean backfill

SOUTH FORK OF THE CDA RIVER

CDA Trust will start to investigate contamination sources within the floodplain from Mullan to the "Box" prioritizing future design and cleanup work



LOWER BASIN REMEDIAL ACTIONS

2002 INTERIM ROD GOALS

Reduce human exposure to lead-contaminated soil

Improve water quality

Reduce particulate lead and other heavy metals in Basin ecosystem

2002 INTERIM ROD FOCUS

Lower Basin Riverbeds and banks

Lower Basin Floodplains

Recreational area cleanup



LOWER BASIN RIVERBEDS AND BANKS PROJECTS

DUDLEY REACH

Design for pilot cap & dredge project is at 30% but project is on hold until LB WCA sited

CATALDO REACH RIVERBANK DESIGN

Design for a riverbank pilot project at river mile 166-167 to address eroding banks

CATALDO REACH RIVERBANK INVESTIGATIONS

Characterization of additional riverbanks at Cataldo Reach to prioritize design for pilot projects to address sediment transport



LOWER BASIN FLOODPLAIN PROJECTS

GRAYS MEADOW

695-acre agriculture to wetland conversion will be completed in the spring of 2025 with O & M starting shortly after completion

GLEASON WETLAND REMEDICATION & RESTORATION

250-acre easement property will be characterized in 2025 for a potential agriculture to wetland conversion



BASIN ENVIRONMENTAL MONITORING



BASIN ENVIRONMENTAL MONITORING PROGRAM GOALS

ASSESS LONG-TERM TRENDS

Surface water

Sediment

Groundwater

Biological resource conditions

EVALUATE

Remedial Action Objectives

Applicable or Relevant and Appropriate
Requirements

Preliminary Remediation Goals

UNDERSTAND EFFECTIVENESS AND EFFICIENCY OF REMEDIAL ACTIONS

**DATA FOR CERCLA FIVE-YEAR
REVIEW**

ENVIRONMENTAL MONITORING UPPER BASIN

THE BOX

Four stations monitored twice per year upstream and downstream of the GCS

Biological monitoring of benthic macroinvertebrates at two stations upstream and downstream of the CTP

UPPER BASIN-NINEMILE CREEK & CANYON CREEK

Surface water quality samples two times per year during peak spring runoff and late summer base flow conditions

Additional surface water quality samples by USGS four times per year during winter storm, peak spring runoff, late summer base flow, and late fall storm conditions

SOUTH FORK COEUR D'ALENE RIVER

Surface water quality samples upstream of the box two times per year during peak spring runoff and late summer base flow conditions

Additional surface water quality samples by USGS at seven locations in the South Fork Coeur d'Alene River ranging from Mullan to Pinehurst.



ENVIRONMENTAL MONITORING LOWER BASIN



LOWER BASIN

The Lower Basin Area-wide Remedial Action Effectiveness Monitoring Plan is in progress and will continue to be drafted in 2025

Surface water quality samples twelve times per year at seven locations in the Lower Basin targeted for high flow events and a fixed frequency approximately every 6 weeks

CDA LAKE

Initiated in 2024, continuous monitoring of surrogate technologies to estimate concentrations of suspended sediment, lead, and phosphorus at three USGS monitoring locations in the Lower Basin: Cataldo, Rose Lake, and Harrison

BIOLOGICAL MONITORING

Non-invasive biomonitoring waterfowl research of wood duck eggshells and tundra swan fecal samples to observe changes in lead exposure over time is anticipated to be completed in 2025



OPERATIONS & MAINTENANCE



OPERATIONS & MAINTENANCE

Private properties remediated under BPRP

- Individual property owners

Public gravel and paved remediated roads

- Local governments with jurisdiction over roads

Remedy protection program

- Governmental jurisdictions or property owner
- Environmental covenants filed as riders to deeds of remediated property

CDA Work Trust is responsible for their own work

- Except: road and remedy protection projects, gray's meadow after five years, and others

CTP and Ground Water Collection System


- IDEQ

Other remedies under CERCLA

- IDEQ

Remedies on BLM and NFS administered lands within the site and North Fork of CDA River

- BLM, USDA FS



PART 2

OTHER ACTIVITIES

DEQ LAKE MANAGEMENT

LMP goals

Improve Scientific Understand of Lake Conditions through monitoring, modeling, and special studies

- Water quality monitoring & coordination of science coordination team to implement NAS suggestions

Establish and strengthen partnerships to maximize benefits of actions under existing regulatory framework

Finalize and implement a Nutrient Reduction Action Plan

- Work with funding recipients(10)+ under the LI initiative to implement phosphorus reduction projects in Coeur d'Alene basin
- Analyze tributary data
- Share data gap monitoring
- Coordinate with CDA Tribe on nutrient loading in southern end of the lake
- Collaborate on WQ improvements in CDA basin
- Find opportunities to align nutrient reduction and remediation in lower basin

Aquatic plant surveys

Increase Public Awareness of Lake Conditions and Influences on Water Quality

- Our Gem Collaborative, TCP, Bay Watchers, local gems & outreach about Alta's risk-based evaluation of CDA lake

Establish funding mechanisms to support LMP goals, objectives and strategies



CDA TRIBE LAKE ACTIVITIES

Monitor Water Quality for metals, nutrients & Physical parameters

Model data collected from the Lake, Meteorological stations and USGS stations

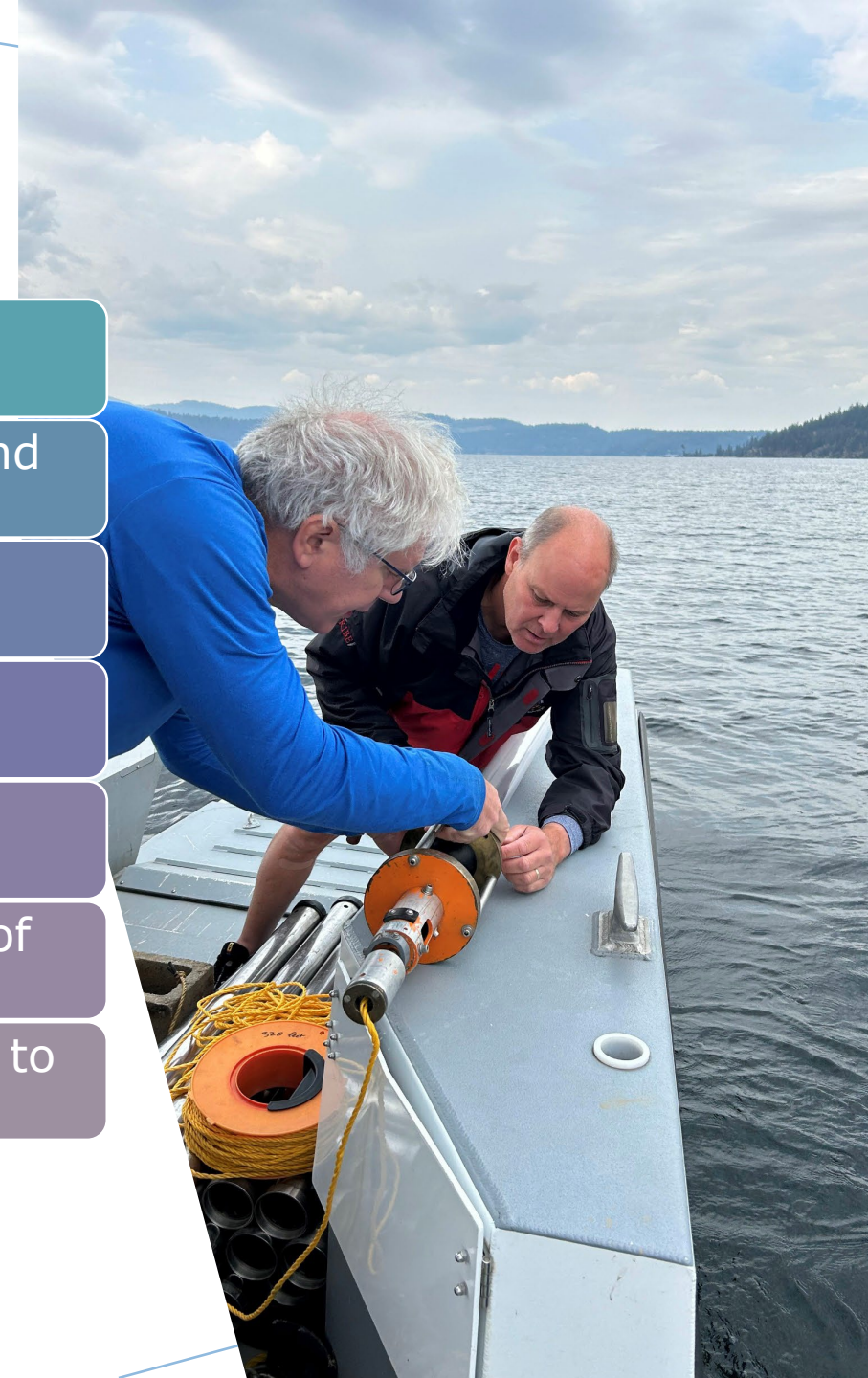
Monitor and treat invasive aquatics

Work with EPA to identify opportunities to align nutrient reduction and remedial efforts in the lower basin

Support TCP/YWS & The Our gem collaborative

Work with DEQ to implement nutrient and water assessment of the St. Joe

Continue to request that EPA reviews/evaluates their decision to "defer" a remedy for the lake





OTHER ACTIVITIES & RESPONSIBILITIES

Flood control and infrastructure

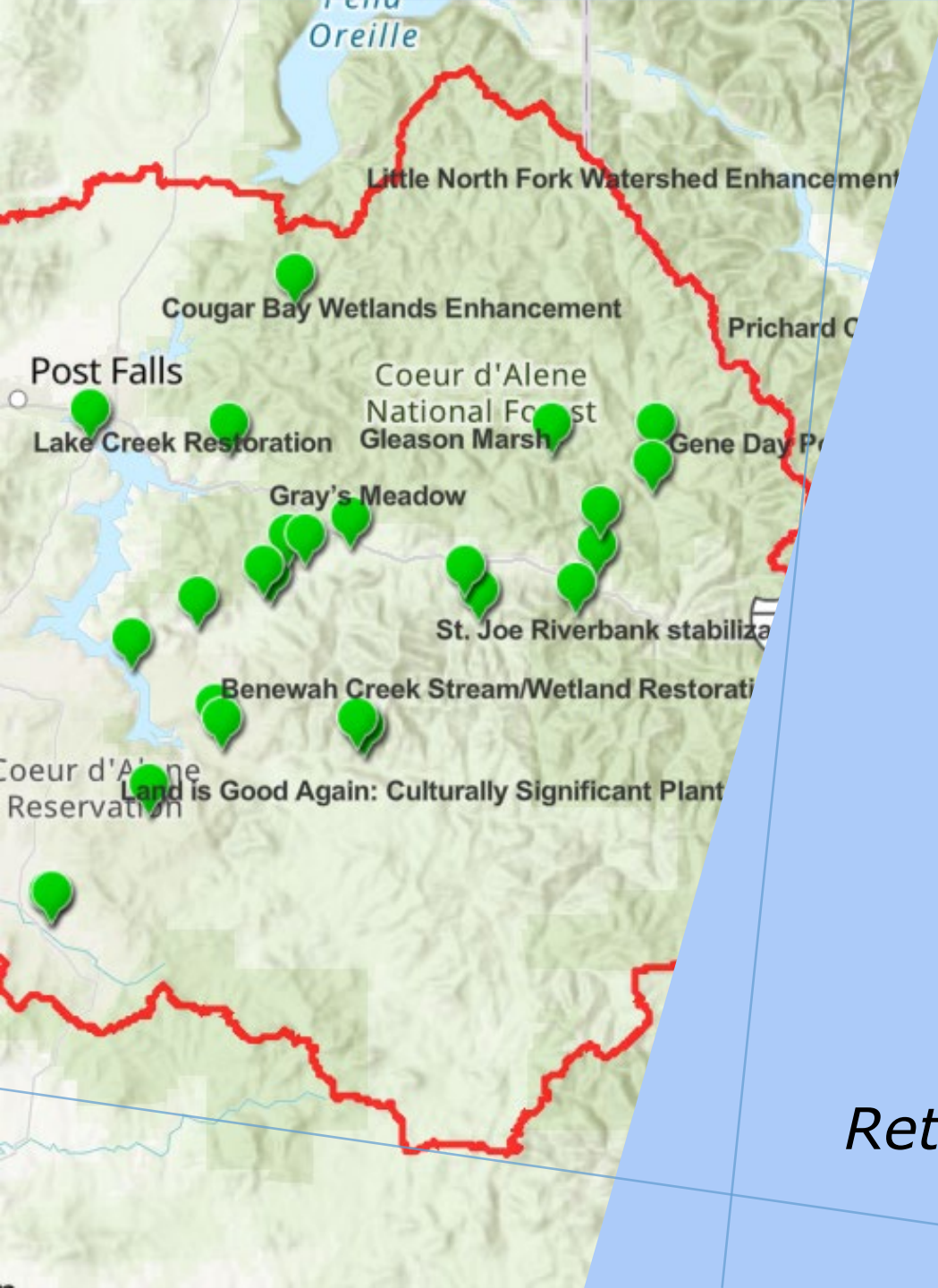
- BEIPC will work with local flood group to update flood maps for Kellogg & Pinehurst

Communication and public involvement

- BEIPC will continue to work with community involvement coordinators and citizens coordinating council to carry out public involvement, outreach, and education regarding basin activities
- BEIPC will participate in regional outreach and educational committees

State of Washington Activities

- Ecology will continue to monitor previous clean up along the Spokane River



RESTORATION PARTNERSHIP

USDA, USFS, USFWS, BLM, CDA TRIBE, IDFG AND IDEQ

Restoration Partnership was awarded largest settlement for natural resource restoration in US history at 79.4 million dollars

16 projects have been completed to date

17 projects on are on-going

Returning natural resources back to a healthy condition



THANK YOU

www.basincommission.com