

# Idaho Department of Environmental Quality



**Coeur d'Alene Lake Management Update**

**Jamie Brunner**

**November 20, 2024**

# Leading Idaho for Coeur d'Alene Lake

- Total of \$35 million for projects
- Ranked through the Coeur d'Alene Lake Advisory Committee (CLAC)
- Projects:
  - Nonpoint source
  - Wastewater upgrades
  - Stormwater treatment
  - NAS recommendations



# Funding changes from last update

- Previously \$600k unallocated as of the last update.
- New NAS project funded from previously ranked list (\$200k)
- Leaving Coeur d'Alene Lake projects with \$400k unallocated funds.



# Funding changes continued...

## South Fork Sewer District

- Davis-Bacon wage requirements ( + \$1.2 million)
- Smelterville tie-in (\$4.8-6.3 million)
- SFSD groundbreaking  
September 20, 2024



# Active Projects

On-the-ground projects, Wastewater Treatment Upgrades, and National Academy of Science Recommendations

# City of Kellogg

- Phase 1&2 Complete. Bunker Creek, Hill Street, North Kellogg, & Vactor Truck
- Phase 3- Mapping/assessing remaining drainages and setting priorities.

Photo BEFORE CONSTRUCTION - SOUTH HILL ST



South Hill Street before construction

Photo DURING CONSTRUCTION - SOUTH HILL ST



CDS Structure install

Photo DURING CONSTRUCTION - SOUTH HILL ST

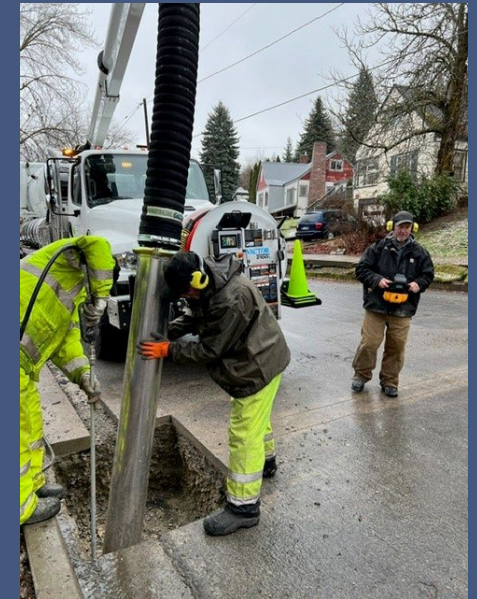


Prepped for asphalt installation

Photo AFTER CONSTRUCTION - SOUTH HILL ST



Complete repaired area around CDS structure



# City of Coeur d'Alene

- Sanders Beach, Mullan, and Independence Point complete
- 3<sup>rd</sup> Street outfall Spring 2025

**Improving Coeur d'Alene Lake**  
Stormwater Volume Reduction Program

**Stormwater Filtration Cross-section**

Stormwater enters here  
Sediment settles here  
Oil floats here  
Sediment settles here  
OIL/WATER SEPARATOR  
Sand/compost filter removes pollutants  
Clean water discharges into ground  
DRYWELL  
DRYWELL

**Leading Idaho Initiative for Coeur d'Alene Lake**

Managing phosphorus levels is critical to protecting the health of Coeur d'Alene Lake. The lake's water quality has improved over several decades thanks to cleanup activities upstream in the Silver Valley. However, phosphorus levels are still increasing. In 2021, Governor Little launched the Leading Idaho Initiative for Coeur d'Alene Lake and established the Coeur d'Alene Lake Advisory Committee. Governor Little directed funding for projects, such as this one, that reduce phosphorus and improve water quality in the lake.

**Drainage area project**

Two adjacent stormwater outfalls discharge into Coeur d'Alene Lake at the 11th Street Marina and the 12th Street Sanders Beach public swimming area. The drainage area contributing to these outfalls includes residential properties, streets and sidewalks, and other factors that add to the lake's phosphorus content. This project diverts stormwater into underground storage units with sand and compost filter beds that slowly infiltrate the stormwater into the ground, removing pollutants such as phosphorus, petroleum, and heavy metals. The storage and filtration units can accommodate water from a significant storm and help to reduce the stormwater discharge into Coeur d'Alene Lake.

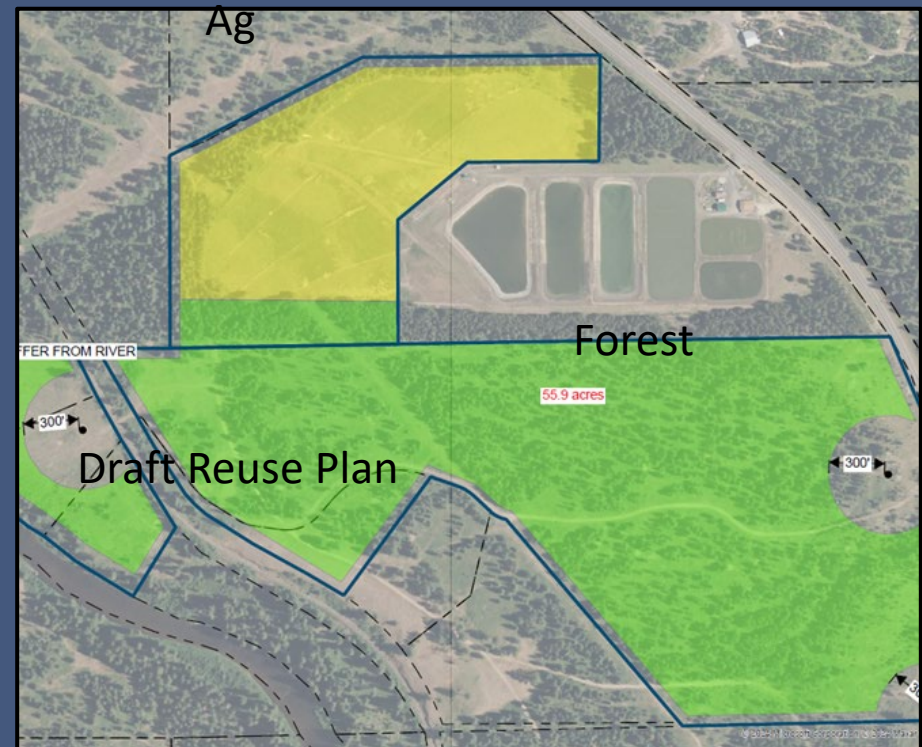
The City of Coeur d'Alene has reduced the volume of stormwater discharged to Coeur d'Alene Lake and the Spokane River through the Stormwater Outfall Volume Reduction Program. Projects diverting stormwater from existing outfalls to grassy swales or underground storage and filtration units capture stormwater pollutants instead of discharging them into the lake or river. Hundreds of acres of stormwater runoff have been diverted from our surface waters.

City of Coeur d'Alene IDAHO  
IDAHO DEPARTMENT OF ENVIRONMENTAL QUALITY

Two stormwater signs planned near Sanders Beach and Tubbs Hill Trailhead.

# Santa-Fernwood Wastewater Reuse

- Land purchased
- Reuse permit process initiated
- Silviculture and forest report shared with IDEQ





# NAS Recommendations

## Science Coordination Team

- Working on priorities document

## St. Joe Watershed Assessment

- Monitoring in progress

## Evaluation of Recreational Areas in Coeur d'Alene Lake and Spokane River

- Samples collected this summer
- Final report 2026



# NAS Recommendations

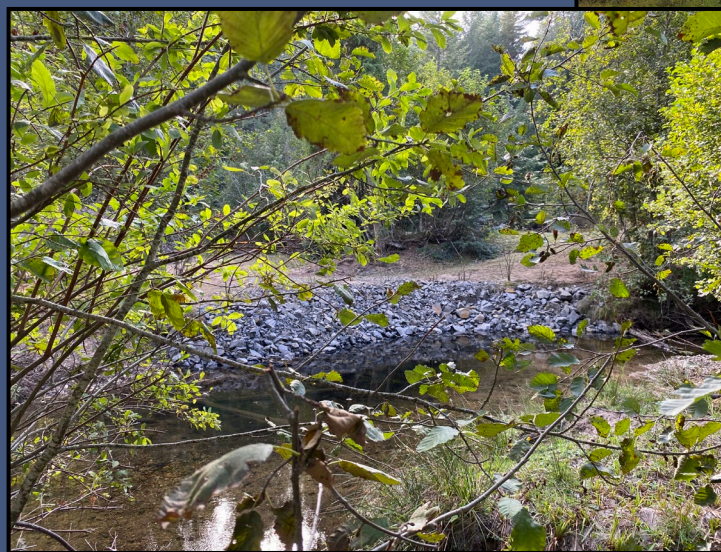
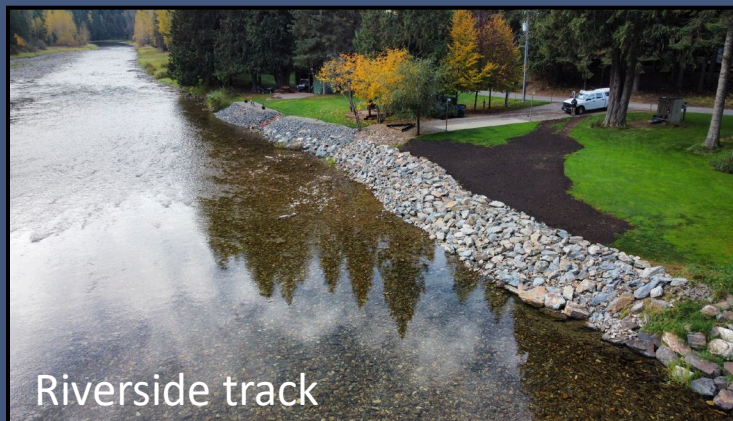
## Comprehensive Coring Plan

- Sponsored by the Coeur d'Alene Tribe
- Lakebed sediment coring to view historic lake conditions
- \$200k Leading Idaho allocated
- Additional funding:
  - Avista, \$200k
  - Restoration Partnership \$100k



# Other completed projects

- Riverside Track
- Schlagel Draw
- Sunnyside Road
- Marmot Trail road
- Mica Creek Stabilization
- Kellogg School District
- Wolf Lodge Creek
- Mica Creek Floodplain Access





[Home](#) / [Leading Idaho and Coeur d'Alene Lake](#)

## Leading Idaho and Coeur d'Alene Lake



Coeur d'Alene Lake, located in Idaho's Panhandle, has long been a hub for recreation, tourism, and economic activity. The area is also home to historical mining activity, and millions of tons of metals-laden

### Leading Idaho Funding Overview

The following table includes Leading Idaho projects that have funding agreements in place.

Show  entries

Search:

Project Name	Leading Idaho Funding	Estimated Phosphorus Reduction to Coeur d'Alene Lake (Annually)
<a href="#">City of Kellogg Stormwater Management Upgrades (Phases 1, 2, and 3)</a>	\$2.24 million	700 pounds
<a href="#">Coeur d'Alene Lake Science Coordination Team</a>	\$150,000	NA—This project will establish priorities and guide future decisions relating to Coeur d'Alene Lake.
<a href="#">Coeur d'Alene Stormwater Volume Reduction Project</a>	\$1.4 million	280 pounds

# Thank you

**Jamie Brunner**

**(208) 666-4623**

**[jamie.brunner@deq.idaho.gov](mailto:jamie.brunner@deq.idaho.gov)**

