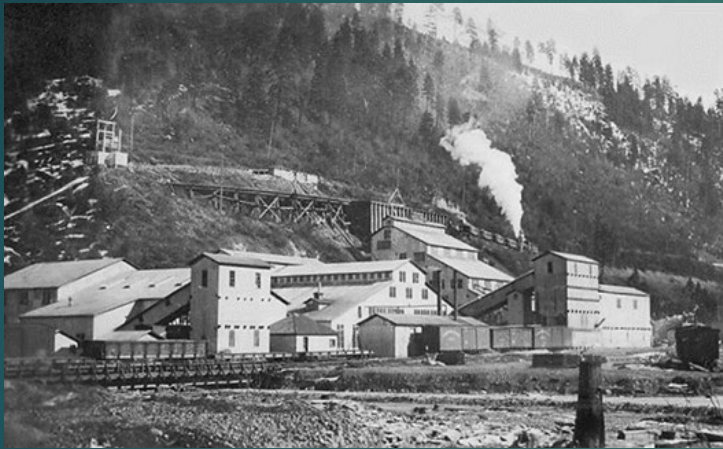




**COEUR D'ALENE BASIN
RESTORATION PARTNERSHIP
BEIPC UPDATES 2025**

RESTORATION PARTNERSHIP & TRUSTEE COUNCIL

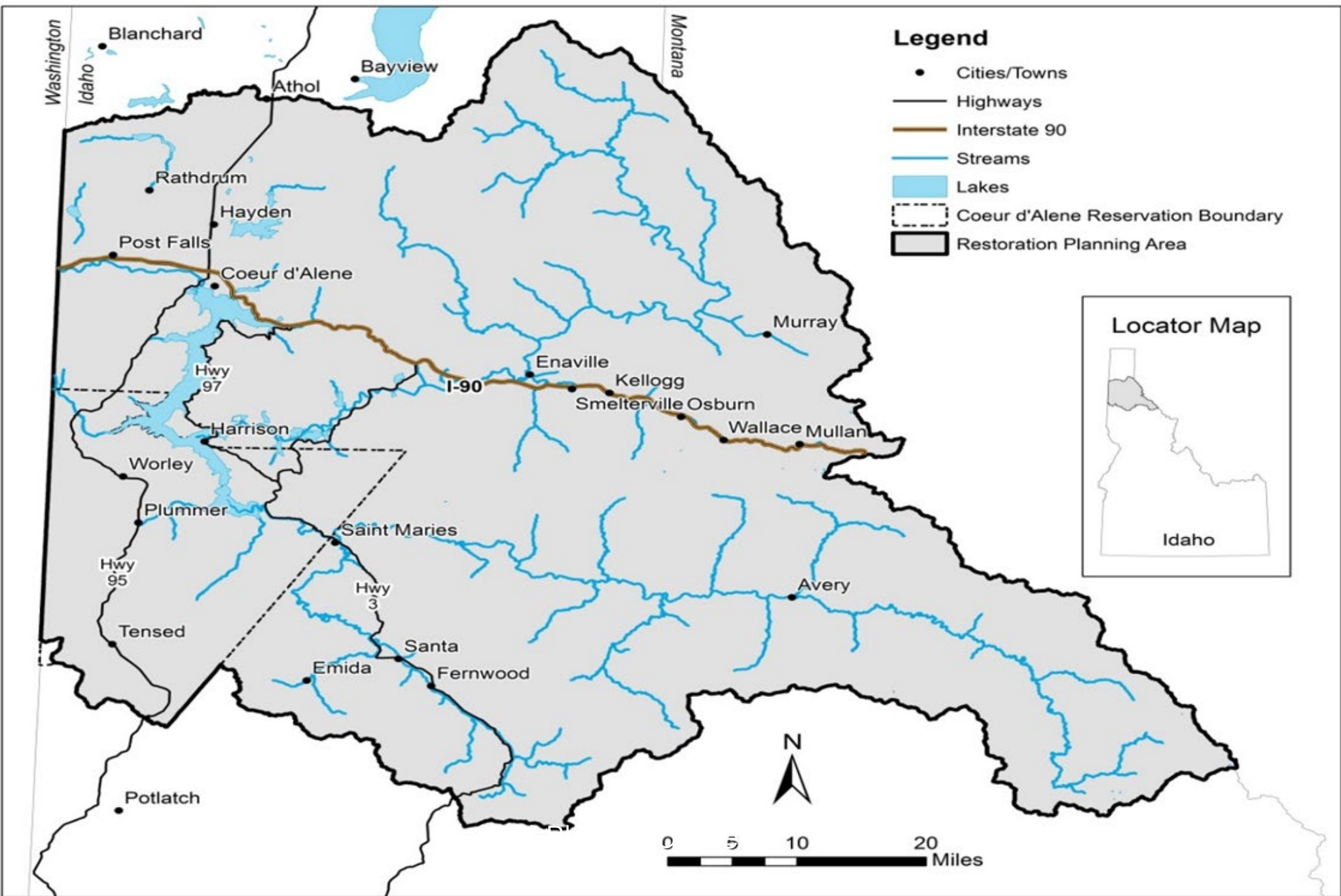
- ▶ U.S. DEPT. OF THE INTERIOR
- ▶ U.S. DEPT. OF AGRICULTURE
- ▶ COEUR D'ALENE TRIBE
- ▶ STATE OF IDAHO



WHAT IS RESTORATION?

- ▶ THE PROJECT RESTORES, REPLACES, AND/OR ACQUIRES THE EQUIVALENT OF NATURAL RESOURCES OR ASSOCIATED SERVICES THAT WERE INJURED BY THE RELEASE OF HAZARDOUS SUBSTANCES.





FY24 ACCOMPLISHMENTS

- ▶ COUGAR BAY STREAM & WETLAND RESTORATION: CULVERT REPLACEMENT AND ~ 800 NATIVE RIPARIAN PLANTINGS INSTALLED.
- ▶ NOXIOUS WEED TREATMENTS
- ▶ SPRING AND FALL RIPARIAN AND WETLAND PLANTINGS
- ▶ TOTAL EXPENDITURES IN FY24: \$3,267



GUŦ HENCH'MCHINMSH - NATIVE WILLOW NURSERY FOR SUPPORT OF RESTORATION ACTIONS

- ▶ MONITORED GROWTH AND HARVEST OF 7 NATIVE WILLOW SPECIES FOR POLE AND WHIP AVAILABILITY FOR RP PROJECTS
- ▶ INVASIVE SPECIES CONTROL
- ▶ TOURS WITH PARTNERS
- ▶ TOTAL EXPENDITURES IN FY24: \$1,872



Uł q h esu 'l u mk h w (l a n d i s g o o d AGAIN): CULTURAL SIGNIFICANT PLANT RESTORATION

- ▶ CAMAS SEED AND BULBS HARVESTED AND REPLANTED IN ADDITIONAL AREAS
- ▶ DEVELOPING A HORTICULTURE PROGRAM WITH PARTNERS
- ▶ BEAVER SURVEYS AND DAM REINFORCEMENTS
- ▶ TOTAL EXPENDITURES IN FY24: \$154.00



CHDELM KHWA CHATQ'ELE'ET MONITORING AND MODELING COEUR D'ALENE LAKE'S RESPONSE TO RESTORATION

- ▶ LAKE AND LOWER CDA RIVER WQ SAMPLING (2 LAKE, 1 ST. JOE, 1 HARRISON) 13 EVENTS
- ▶ DATA ANALYSIS AND WRITING SYNTHESIS REPORTS AND BHSS DATA MANAGEMENT PLAN.
- ▶ TOTAL EXPENDITURES IN FY24: \$8,359



HEPTON LAKE WETLAND RESTORATION PROJECT

- ▶ COMPLETION OF LEVEE REPAIR CONSTRUCTION TO ALLOW FOR 1,350 ACRES OF CLEAN WATERFOWL HABITAT
- ▶ CULTURALLY SIGNIFICANT PLANTINGS AND NATIVE SEED REGROWTH
- ▶ TOURS WITH PARTNERS
- ▶ REDUCTIONS IN INVASIVE PIKE HABITAT
- ▶ TOTAL EXPENDITURES IN FY24: \$55,137


STRATA **Photographic Documentation** Report #: PL-000011
Report Date: 04/05/2024

Hayden
1010 West Hayden Avenue
Hayden, ID 83835
Phone: 208.772.2428

Client:
Alta Science & Engineering, Inc.
505 W. Riverside Avenue, Suite 630
Spokane, WA 99201

Project:
CD23026A
Hepton Lake Geotechnical Assistance
Hepton Lake, ID

STRATA Representative: ANDERSON, THOMAS Date: 03/18/2024



Description:
Structural fill/on-site soil blend placement, south side of the key trench



Description:
Structural fill/on-site soil blend placement, north side of the key trench

Page 15 of 45

GRAY'S MEADOW WETLAND CONVERSION/RESTORATION

- ▶ CONTINUE TO WORK WITH EPA AND THE WORK TRUST ON REMEDIAL ACTIVITIES/ CONSTRUCTION TO PREPARE FOR RESTORATION
- ▶ TOURS WITH PARTNERS
- ▶ NESTING BIRD SURVEYS AND ISLAND BUILDING
- ▶ WATER CONTROL STRUCTURES, DIKE REINFORCEMENTS, DUST CONTROL, LAMB PEAK WATER TRANSFERS, ETC.
- ▶ TOTAL EXPENDITURES IN FY24: \$4,012,830



GENE DAY POND

- ▶ FINALIZED ROW AGREEMENT
- ▶ FINALIZE IN 2025
- ▶ TOTAL EXPENDITURES IN FY24: \$3,211



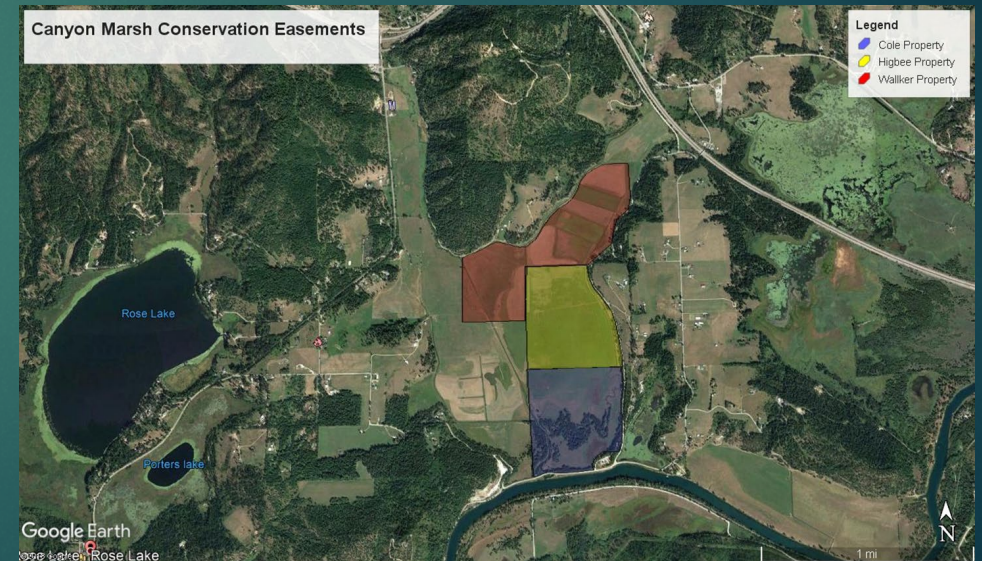
NFK CDA RIVER C.E.

- ▶ IDFG CONTINUES TO HAVE CONVERSATIONS WITH THE LANDOWNER ABOUT PRESERVING THE COLD WATER REFUGIA ALONG THE RIVER.
- ▶ PERMANENT PROTECTION WITH A C.E. OF THE NATURAL FLOODPLAIN COMMUNITIES AND COLD WATER HYPORHEIC FLOW
- ▶ TOTAL EXPENDITURES IN FY24: \$0



CANYON MARSH AG TO WETLAND

- ▶ SOW DEVELOPMENT USING BASELINE INFO
- ▶ CONCEPTUAL WETLAND RESTORATION PLANNING UNDERWAY
- ▶ BEMP MONITORING ONGOING
- ▶ TOTAL EXPENDITURES IN FY24: \$8,695



GLEASON'S MARSH AG TO WETLAND

- ▶ WORKED WITH INLC TO DEVELOP BASELINE RESOURCE REPORTS
- ▶ WORKED WITH EPA ON REMEDIAL INVESTIGATIONS WITH REMEDIATION PLANNED FOR 2025-2026
- ▶ TOTAL EXPENDITURES IN
FY24: \$16,528



LAKE CREEK WATERSHED RESTORATION

- ▶ FINALIZED RESTORATION DESIGNS FOR STREAM ENHANCEMENTS, FLOODPLAIN ENGAGEMENT, AND CULVERT REPLACEMENTS IDENTIFIED WITH WORLEY HWY DISTRICT
- ▶ TRIBAL YOUTH INTERNS
- ▶ NATIVE PLANTINGS AND LWD INSTALLATIONS
- ▶ TOTAL EXPENDITURES IN FY24: \$76,980



PRICHARD CREEK PLANNING AND PHASE 1 IMPLEMENTATION

- ▶ SIGNED C.E. BY IFG TO PROTECT 1,813 ACRES OF UPLAND FOREST AND FLOODPLAINS AND PROVIDE WILDLIFE CORRIDORS
- ▶ PROJECT PLANNING, INVASIVE SPECIES MANAGEMENT, AND BDA'S INSTALLED
- ▶ PHASE I CONSTRUCTION OF FLOODPLAIN CONNECTIVITY AND MOVED INTO PHASE II PLANNING
- ▶ TOTAL EXPENDITURES IN FY24: \$1,602,348



UPPER LITTLE NFK CDA RIVER RESTORATION

- ▶ LWD SOURCING AND INITIAL WORK IN HUDLOW MEADOWS
- ▶ MULTIPLE PARTNERS AND FUNDING SOURCES THROUGH COST SHARE WHICH SUPPORTS THE LONGEVITY OF THIS WORK
- ▶ SURVEY WORK FOR DESIGN OVER IRON CREEK (FSR 1532)
- ▶ TOTAL EXPENDITURES IN FY24: \$34,506



UPPER ST. JOE BULL TROUT HABITAT RESTORATION

- ▶ INITIATED NEPA ON SURVEY AND DESIGN WORK FOR REPLACING UNDERSIZED AND DETERIORATING BRIDGE OVER RED IVES CREEK
- ▶ STREAM SURVEY AND WOOD UNIT RECONNAISSANCE
- ▶ SURVEY WORK FOR DESIGN OVER IRON CREEK (FSR 1532)
- ▶ TOTAL EXPENDITURES IN FY24: \$8,915



BEAVER CREEK

- ▶ MULTI YEAR AND MULTI PHASED PROJECT INITIATED IN THE HEADWATERS
- ▶ COST SHARE OPTIONS EXPLORED
- ▶ TOTAL EXPENDITURES IN FY24: \$0



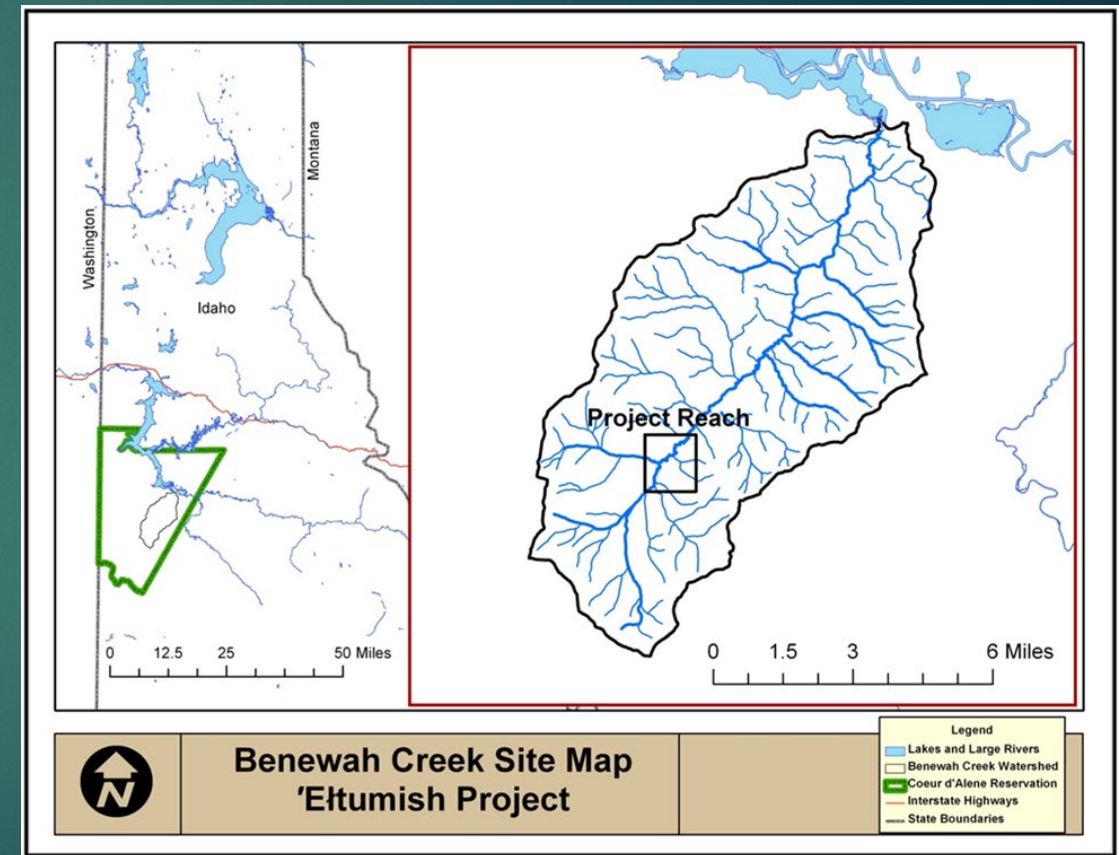
MIESEN CREEK FISH PASSAGE

- ▶ COMPLETED HYDRAULIC MODELING TO AID IN DESIGN
- ▶ NUMEROUS PARTIES CONTRIBUTING MATCHING FUNDS
- ▶ SECTION 106 OF NHPA INITIATED
- ▶ TOTAL EXPENDITURES IN FY24: \$23,946



BENEWAH CREEK STREAM & WETLAND RESTORATION IN DROUGHT

- ▶ INFRASTRUCTURE AND SURVEY/DESIGN WORK
- ▶ TOTAL EXPENDITURES IN FY24: \$0



LAKE CREEK CORRIDOR PROTECTION & ENHANCEMENT

- ▶ TRIBAL STAFF AND LEADERSHIP COORDINATED WITH INLC & PRIVATE LANDOWNER
- ▶ FINALIZING CONTRACT DOCUMENTS
- ▶ TOTAL EXPENDITURES IN FY24: \$0



BIG CREEK FISH PASSAGE BARRIER REMOVAL

- ▶ TRIBAL STAFF, USFS, BLM, SUNSHINE MINE, & ENGINEER HELD NUMEROUS COORDINATION MEETINGS
- ▶ SITE SURVEYS AND CR INVESTIGATION COMPLETE
- ▶ NEPA DNA/CATEX UNDERWAY
- ▶ CONSTRUCTION TO BEGIN SUMMER 2025
- ▶ TOTAL EXPENDITURES IN FY24: \$0



AOP SURVEYS AT STREAM CROSSINGS

- ▶ COMPLETED QA/QC PLAN
- ▶ CONTRACTED WITH TROUT UNLIMITED FOR FIELD SURVEYS
- ▶ FISH PASSAGE BARRIER DATA UPLOADED TO:
[HTTPS://INTERAGENCY-BIL-FISH-PASSAGE-PROJECT-1-FWS.HUB.ARCGIS.COM/](https://interagency-bil-fish-passage-project-1-fws.hub.arcgis.com/)
- ▶ TOTAL EXPENDITURES IN FY24: \$0 WITH \$43K ANTICIPATED





QUESTIONS?

- ▶ 20 PROJECTS UNDERWAY
- ▶ 1 BLM, 5 IDFG, 1 DEQ, 3 USFS, 2 USFWS, 8 CDA TRIBE
- ▶ TOTAL EXPENDITURES IN FY24: \$5,856,748
- ▶ FUTURE PROJECT IDEA SOLICITATION IN 2026



rstevens@cdatrIBE-nsn.gov